

▣ UPS교체 공사 위치 ▣



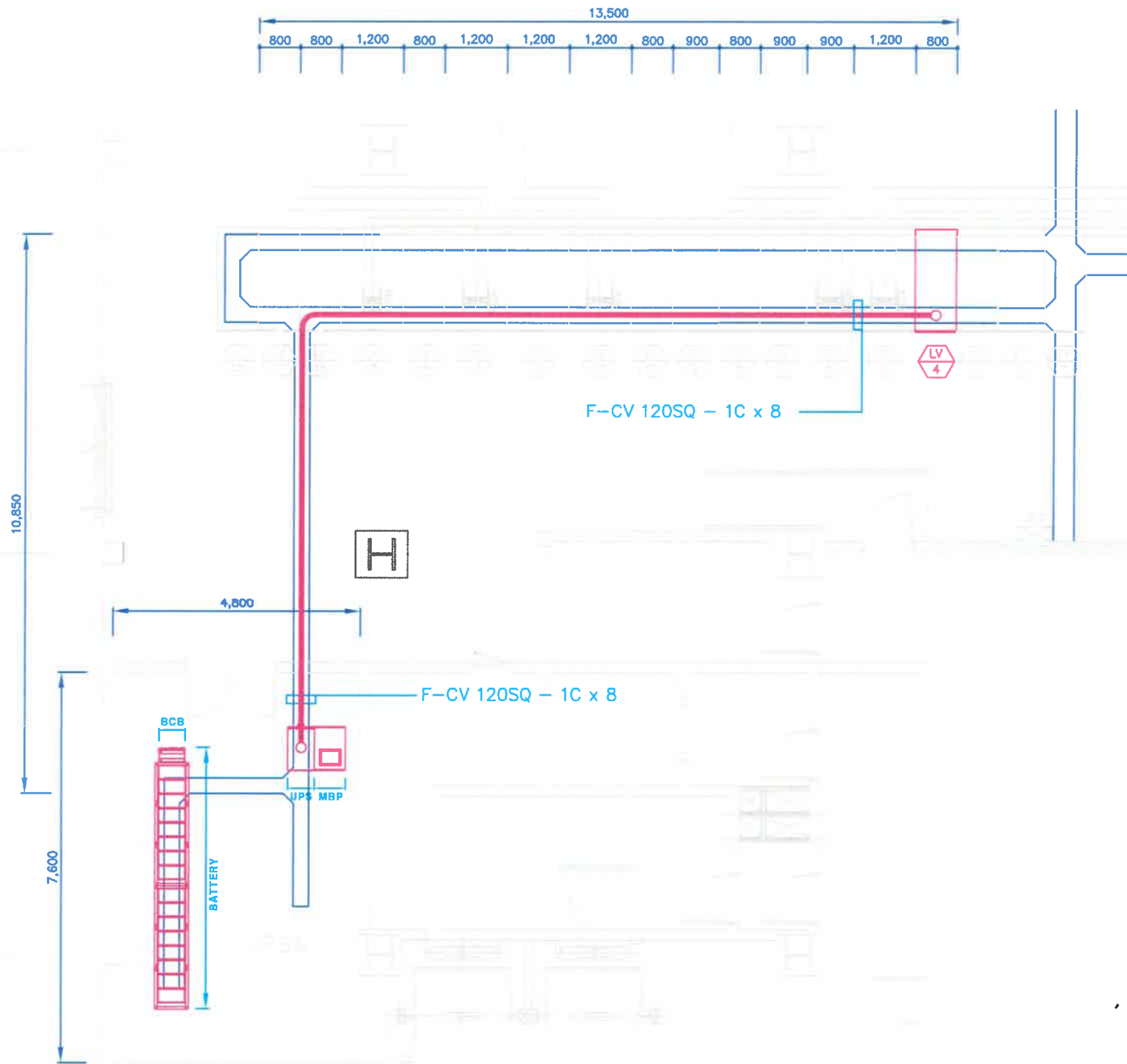
지하5층 전기실 내 UPS



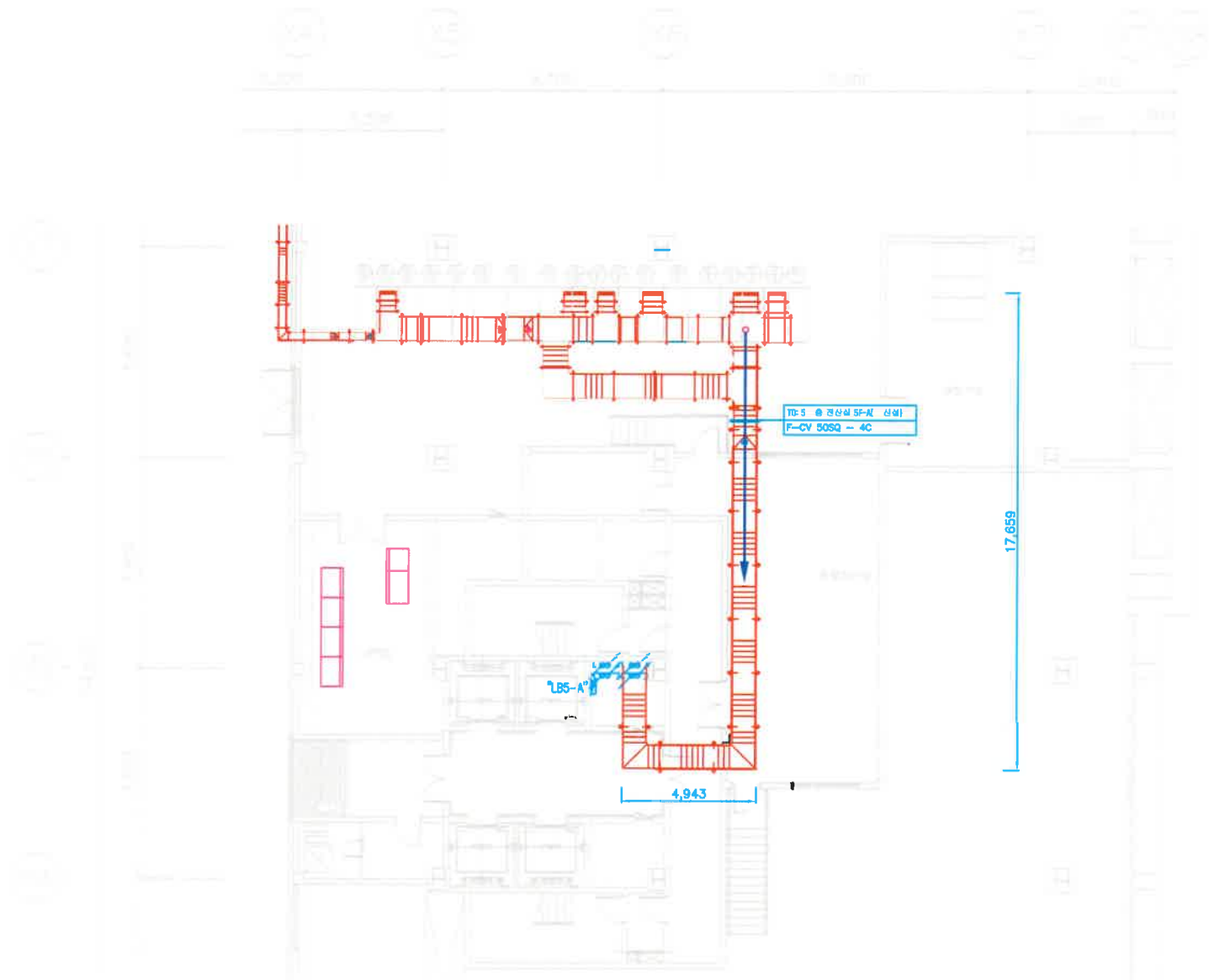
지하5층 전기실 교체 배전 차단기



5층 전산실 신규 분전함 설치 구역



지하5층 UPS 간선도 - 1

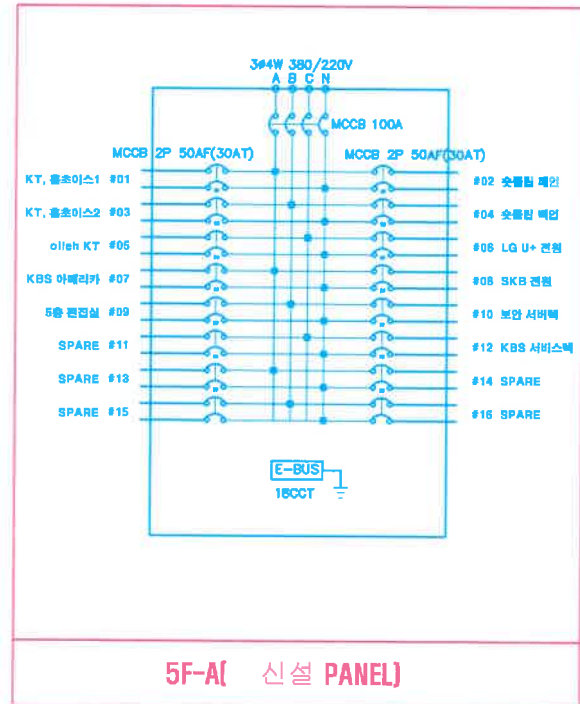


지하5층 UPS 간선도 - 2



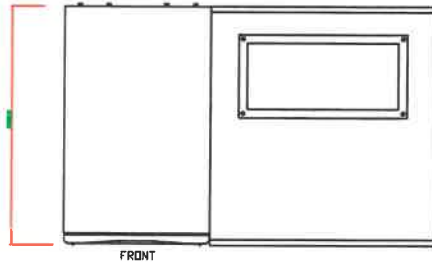
NOTE

1. 전력 케이블 : F-CV 35SQ - 4C
2. 케이블 길이(총 94M)
 - 지하5층 : 23M
 - 지하5층 ~ 5층 : 49M
 - 5층 : 22M
3. 4층 천정내 HI-TEC TRAY(통신)에 후력시블 사용하여 행거에 고정 할 것.
4. 5F-A 본전반 구성(신규 제작)
 - 1차측 : 3상 4선식 100A 차단기(LS산전)
 - 2차측 : 단상 20A 차단기(LS산전) x 14개



5F-A(신설 PANEL)

5층 UPS 간선도



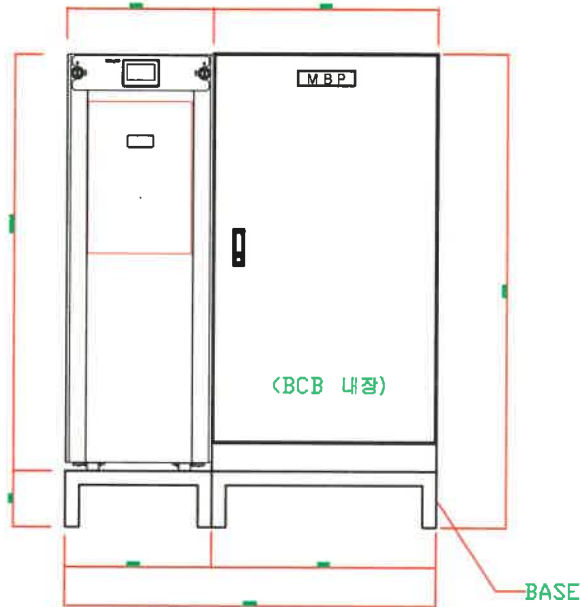
TOP VIEW

SPECIFICATIONS

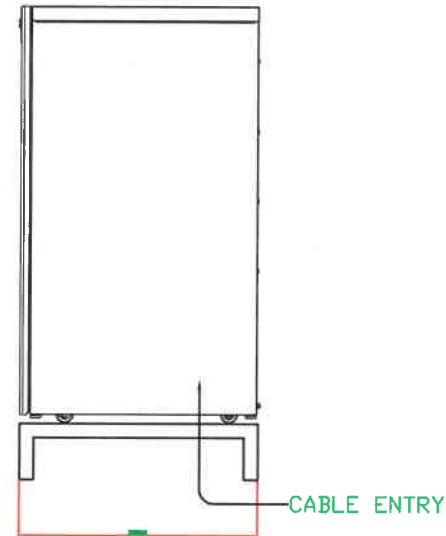
DIMENSION (W x D x H)	UPS	522 X 847 X 1485 mm / SET
	MBP	800 X 850 X 1500 mm / SET
WEIGHT	UPS	250kg / SET
	MBP	300kg / SET
CABLE ENTRY	UPS	Bottom
	MBP	Top & Bottom
COLOR	RAL 9003	

Galaxy VS 150KVA
UPS SYSTEM

UPS MBP



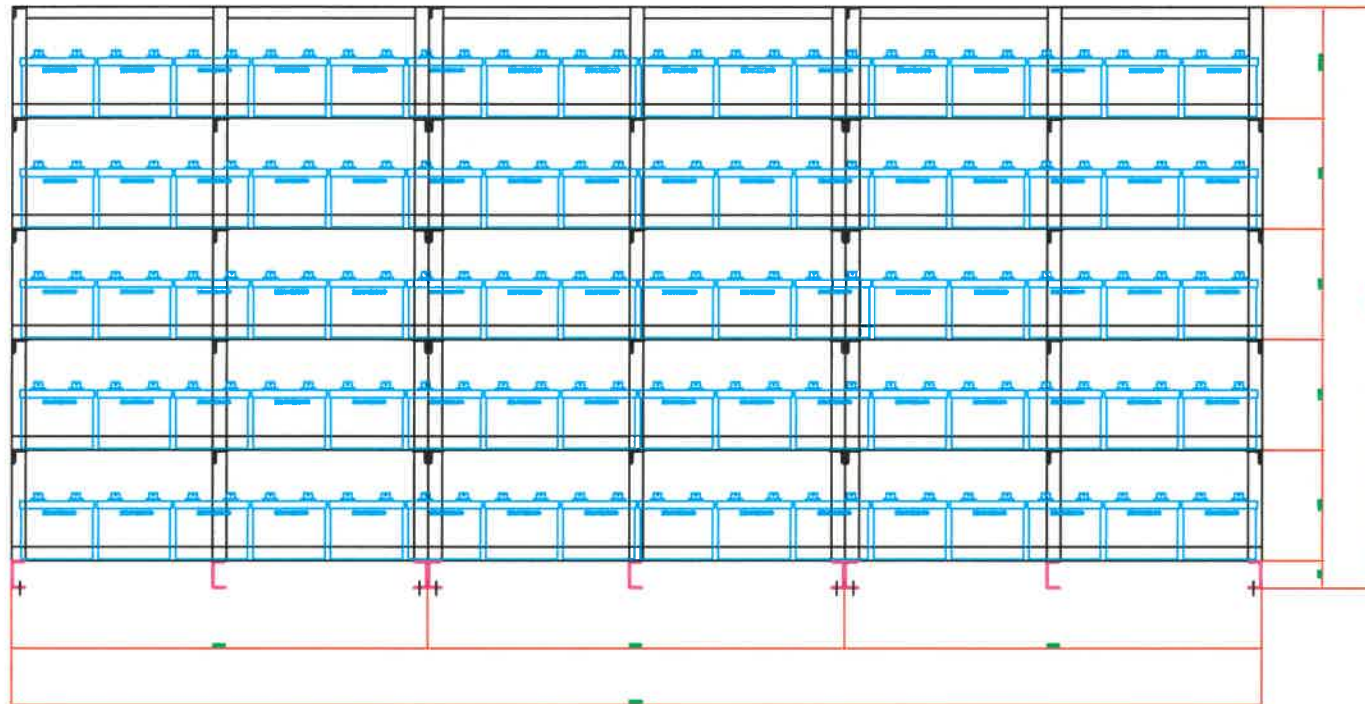
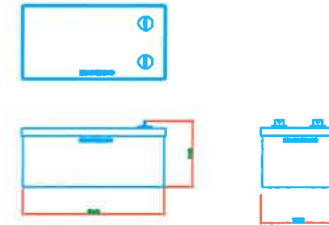
FRONT VIEW



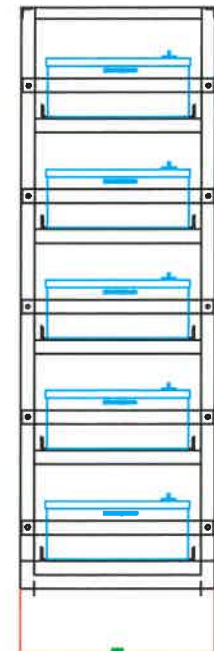
SIDE VIEW
(UPS)

UPS 설치 상세도
S:NONE

- NOTES: 1. BATTERY TYPE: ESP12V-200AH
 2. BATTERY CELLS: 80 CELLS
 3. BATTERY ARRANGE'T: 5step 1row
 4. BATTERY RACK수: 3 set
 5. BATTERY DIMENSION(60KG/EA)



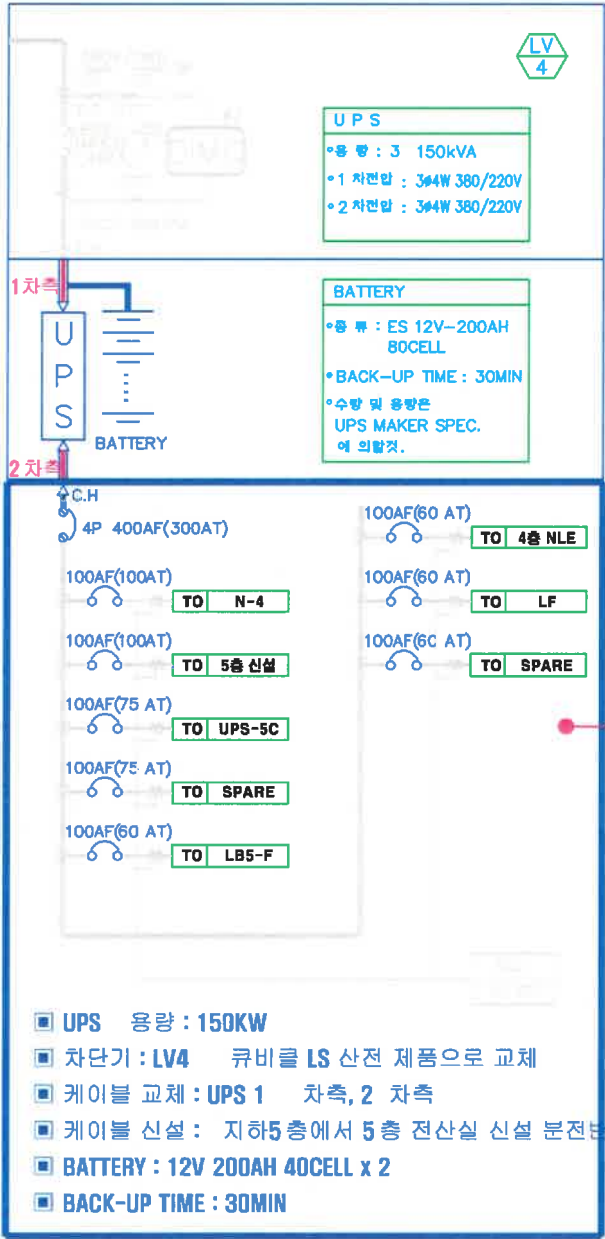
FRONT VIEW



SIDE VIEW

UPS용 축전지 설치 상세도

S:NONE



전기실 UPS 결선도

S:NONE